

DEVELOPING HERMOSA'S INTEGRATED REMOTE OPERATING CENTER

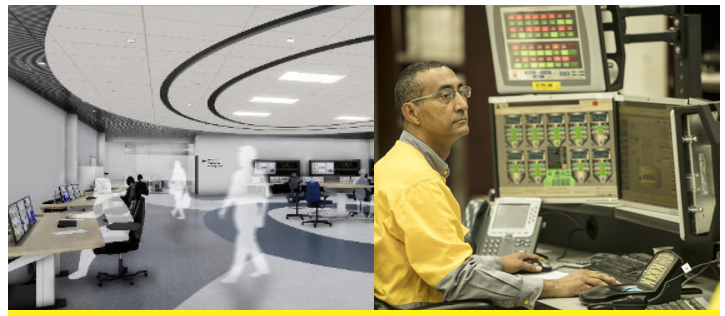


The Hermosa project is a unique opportunity to set a new standard for sustainable mining. We can do this by bringing together modern and proven technologies with low-carbon design approaches never before combined in a single mine design. **South32 puts sustainability at the heart of our operations and is designing Hermosa to use extensive automation technology and, in part, be run remotely from an Integrated Remote Operating Center (IROC) within Santa Cruz County.**

As a part of South32's commitment to Santa Cruz County to maximize Hermosa project benefits to the region, we are considering seven potential sites for the IROC across the county.

What is the IROC?

- It is essentially a command center, where employees would remotely monitor and operate some of the mining equipment located at our proposed mine site in the Patagonia Mountains.
- A commercial building, it would require fewer than five acres to accommodate employees and the technology they need in a comfortable, office-like setting.



Benefits of locating the IROC in Santa Cruz County include:

- **Creating hundreds of good-paying jobs for Santa Cruz County residents**, including those who do not have prior mining experience or who have historically been excluded from the industry.



Our target is to hire 80 percent of all South32 Hermosa employees from Santa Cruz County.



Each Hermosa job will generate labor income equal to 2.5 times the average household income in Santa Cruz County.

- **Creating opportunities to train the local workforce** in new technical fields.
- **Increasing the county's tax revenue** to help fund public schools and services and increase opportunities for local business.
- **Enhancing safety and productivity** by using automation, which is integral to sustainable operations.
- **Reducing commuter traffic** to and from our mine site in the Patagonia Mountains.

Any plans to construct our future IROC in the I-19 corridor would be developed in alignment with the County-driven planning goals. We regularly seek feedback from Santa Cruz County residents and hope to select the site for the IROC toward the end of 2023.

The IROC location is not tied to the battery-grade manganese facility location that is being separately contemplated by South32. South32 will not be mining or locating a battery-grade manganese facility in Rio Rico. We do not own mineral claims in the Rio Rico area and will not be pursuing mineral exploration—a precursor to mining—in Rio Rico either.

*The Hermosa project has the potential to help **power the nation's clean energy future, strengthen the domestic supply chain of critical minerals, grow the local economy, and improve lives in Santa Cruz County and the surrounding community for generations to come.***

Learn more: South32Hermosa.com