

Agenda

Hermosa Advisory Panel Meeting #6 Wednesday, September 15, 12p-2p

Patagonia Public Library, 46 Duquesne Ave (inside Cady Hall)

- 12:00 Working Lunch
- Review Agenda and Acceptance/Amendments to Meeting Minutes: July and August
- 12:15 Panelists: Report Updates
- Patagonia Area Resource Alliance
 - The Nature Conservancy
- 12:25 Recap and Continued Discussion – Workforce Assets and Gaps in Relation to South 32 skills needs
- Rapid Response Sessions, Continued
- Adelmo Sandoval, Nogales Unified School District
 - Michael Young, Patagonia Union High School
- 12:55 Ty Ferre, Distinguished Professor, Hydrology and Atmospheric Sciences, University of Arizona
- Proposed Hydrologic Intermediary Activities
 - Q&A
- 1:40 South 32 Social Impact and Opportunity Assessment
- Draft Scope of Work overview
 - Panelist questions, additions
- 1:55 Wrap Up and Looking Ahead: October 20 meeting

Hermosa Advisory Panel Meeting #6
Wednesday, September 15, 12p-2p

Patagonia Public Library, 46 Duquesne Ave (inside Cady Hall)

The meeting of the Hermosa Advisory Panel was called to order at 12:00 pm on September 15, 2021 at Cady Hall, 46 Duquesne Ave by Angie Donelson.

Attendance

- Meeting Facilitators: Angie Donelson, Robin Breault
- South 32 Hermosa Advisory Panel Members: Adelmo Sandoval, Carolyn Shafer, Damian Rawoot, Gerry Isaac, Linda Shore, Liz Collier, Maritza Cervantes, Mark Beres, Michael Young, Ruth Ann LeFebvre
- South 32 Hermosa Advisory Panel Members Absent: Olivia Ainza-Kramer, Marcelino Varona
- South32: Skylic Estep (HR Business Partner)
- Consultant: Hydrogeologist Ty Ferre
- Scribe: Lizbeth Perez

12:00 Working Lunch; Review Agenda and Acceptance/Amendments to Meeting Minutes: July and August

- Motion to approve Meeting #4 Minutes Approved
- Motion to approve Meeting #5 Minutes Approved
- Panel membership moving from 14 to 12, Nils Urman and Jaime Chamberlain are no longer able to serve as panel members

12:15 Panelists: Report Updates

- Patagonia Area Resource Alliance (see Attachment A, informational sheet) – Carolyn Shafer
 - Shared info about the appeal that 11 organizations submitted to ADEQ based on ADEQ permit release to South32. Handout contains map of Santa Cruz watershed
- The Nature Conservancy (TNC) – Damian Rawoot
 - Background: World’s largest conservation non-profit operating in all 50 states. Patagonia-Sonoita Creek Preserve was Arizona’s first project. It is an ecological gem in a zone that connects sky island species and critical habitats.
 - Within watershed: TNC has springs in the northern section they are trying to protect. Further down, working on wildlife corridor. In Patagonia, working with partners on nature-based economy study to better understand, inform of the value of ecosystem.

- On the preserve side, looking to monitor changes in watershed, and its impacts on the Patagonia-Sonoita Creek Preserve.
- Gerry Isaac: Is one of the philosophies of the Nature Conservancy to let land be developed by nature?
- Damian Rawoot: TNC recognizes that natural systems need some management. Stewardship team leads that, can get back with more information.
- Ruth Ann LeFebvre: Have you found any surprising changes in the watershed?
- Damian Rawoot: Have been taking water data for decades and realized that frequency of testing wasn't sufficient enough to detect different changes. Looking to improve protocol to improve results.

12:25 **Recap and Continued Discussion – Workforce Assets and Gaps in Relation to South 32 skills needs: Rapid Response Sessions, Continued**

- Angie Donelson – see the August meeting minutes - boxes on pages 4-6 summarize what our panelists previously shared about workforce assets and gaps.
- Adelmo Sandoval and Michael Young shared the following overview of their school district programs on the following page; to be added to document “data party” work for October meeting:

Panelist	What programs are you offering to address workforce needs?	Who are you working with/ training and partnering with?	What are your practical and/or institutional barriers?
Adelmo Sandoval, Finance Director, Nogales Unified School District (NUSD)	Provided handout (see Attachment B) of Pima JTED technical trade course offerings for students related to South 32 needs: These include: automotive technologies; business management; network security; technology device maintenance	Business and nursing classes are the most popular Automotive technology class is popular among students (enrollment = 80 students). They are trying to expand classrooms/offer more to enhance enrollments next year. Students taking these classes can test to get Career and Technical Education certifications (test-based)	Want to provide more for students, but lacking resources. Shortage of teachers in AZ, difficult to bring in certified teachers to this small town even with competitive salaries.
Michael Young, Behavior Interventionist & Assistant Principal, Patagonia Union High School	We only have 80 students at the high school. Many interested in trades. Welding –15 signed up this year and we just brought this program back. Auto mechanics class - we have 17 signed up this year We are also beginning to offer a joint dual credit program in cloud computing with Pima Community College. Also offering associates' degree. Would much rather give them college credit than AP credit.	Cochise College for CTE/JTED and Pima College for dual credit. We have a Multi-year IGA with Cochise College – but they would like to be part of Pima Community College like the rest of the county. Two of my students are just a few credits short of their Associate's degree. This is the first year I am offering two Pima math classes; have a qualified math teacher now to do this. Also offering general ed classes. They are wanting to work with Empire HS on an apprenticeship with Caterpillar: diesel mechanics, as well as electronic equipment	Need to reach them as sophomores or even earlier – but students must first show proficiency in reading, writing, math to take advanced classes Demand is in trades. Automotive programs are unavailable - a program he found in Wyoming costs \$76,000 a year. South 32 could consider tuition reimbursement to attract masters-level teachers.

Questions to Adelmo Sandoval:

- Mark Beres: How understaffed are you with NUSD teachers/what is the extent of your shortage?
- Adelmo Sandoval: We have 5,450 students, and 3-4 positions are filled with long-term subs - retired teachers who came back to us.
- Ruth Ann LeFebvre: I'm curious why only the Air Force is represented in JROTC?
- Adelmo Sandoval: We don't have the infrastructure to offer it to other branches.
- Mark Beres: Are these disciplines needed to staff S32 mines?
- Skylic Estep: Not all of them. We do need automotive technology; is your training in strictly gas engines or is diesel technology also included?

- Adelmo Sandoval: We do teach both but focus on gas.
- Skylic Estep: What about electric vehicle maintenance?
- Adelmo Sandoval: No electric vehicle maintenance yet, but it's something we are planning.
- Angie Donelson: Is that something school could consider next year?
- Adelmo Sandoval: Challenge is finding teachers with those certifications
- Skylic Estep: We're looking at options for electric vehicles and electric equipment. Didn't anticipate a full program to service electric vehicles, it was more of a curiosity.
- Angie Donelson: There may also be an opportunity for the fresh produce industry to pursue electric vehicle certifications. The county put together a US Department of Transportation planning grant to explore development of a rail-truck multimodal facility; electric vehicles could potentially serve this facility for short runs.
- Mark Beres: Do NUSD programs meet S32 staffing needs? Will it produce staff that S32 could use? If not, how can they?
- Adelmo Sandoval: We find that in this small town we don't have the same local opportunities for our students. They go away. Need more educational opportunities and opportunities in the private sector here for them to stay.
- Mark Beres: That's the benefit of the mine: jobs.
- Skylic Estep: we're trying to understand what programs are available now to develop talent and which are needed to develop stronger workforce partnerships

Questions to Michael Young:

- Maritza Cervantes: Is the program open to all grade levels? Is it a one-year program?
- Michael Young: Yes, open to all 4 grade levels. For the CTE program, we are currently partnered with Cochise JTED. Once it expires, we will join Pima JTED, which has more offerings than Cochise.

Next steps: Angie will send a poll to panelists via email to vote on a technical assistance contract; this can help identify the workforce gaps we can directly address, through a contract with Robin Breault. A scope of work will be developed after the October meeting for panelist review/approval.

12:55 Ty Ferre, Distinguished Professor, Hydrology and Atmospheric Sciences, University of Arizona

Led discussion/group activity with panel - What is a model?

- When you build a model, you build it for a reason, and it works well for that purpose. However, when you introduce it into other contexts, it is hard to know whether the model is appropriate for that scenario/how much uncertainty exists with the sets of assumptions.
- Modeling is a conversation between every stakeholder group and their interests. Best practice when it comes to models is to lay out stakeholder concerns, then test models that can account for these concerns and make clear the underlying assumptions.
- Gerry Isaac: You talked about decisional and advocacy models. Is that something you can help the group with, to look at models that are out there and identify which is which?
- Ty Ferre: Yes. We will be looking at both.
- Carolyn Shafer: Models are developed based on experience and historical data. How is the process of modeling keeping up with impacts of climate change?
- Ty Ferre: When we build models, we determine what parameters to include. Climate change influences the parameters, which you can measure to input them into and run model.
- Liz Collier: I've asked "At the end of the mine's life, is there going to be any water left to support the community?" They said it depends on what the town's going to do. Is that something we'll be able to predict?
- Ty Ferre: The onus on this group is to figure out what matters. We don't want timeline of model to stop immediately after mine stops, we want it to ensure timeline extends to those who will be here after the mine.
- Carolyn Shafer: One challenge is that dewatering information from mine is on a 4–5-year program. We don't know the life of the mine. How can you create model that accounts for that?
- Ty Ferre: You state as a group, what matters is long term. Model is a tool that asks specific questions; you have to tell them what questions to ask.
- Mark Beres: I am assuming you have knowledge of water in this area. In this region, are we facing water scarcity that will grow? Are we in a drought? Is water security something we need to be particularly concerned about?

- Ty Ferre: Generally, in this area, rain will come in fewer, heavier storms. This may affect the watershed's ability to recharge. I would be concerned, but I wouldn't get ahead of myself.
- Mark Beres: What three questions should we be asking about a model?
- Ty Ferre: Can send them a link to a talk he recently did about this (provided after meeting, entitled Questions that Every Stakeholder Should Ask a Hydrologic Modeler: <https://www.screencast.com/t/Av0YNCg3nwg>). In short, you should be asking three questions: 1) What is driving the model – what question are you answering; 2) What did you do to explore your uncertainty? 3) What about that uncertainty is important? Modelers rarely provide how much uncertainty is embedded within their models.
- Gerry Isaac: Are models designed to predict events based on probability?
- Ty Ferre: Generally, models take a lot of effort and cost to build. You won't get an answer based on probability with those.
- Mark Beres: Are models rated on reliability?
- Ty Ferre: In my opinion, no.
- Mark Beres: Is any model representing hydrology ever accurate?
- Ty Ferre: You should ask about the uncertainty of parameters. Good modelers will tell you what they've done.
- Ruth Ann LeFebvre: I see an economic problem in getting the models done
- Ty Ferre: It can be. What costs a lot is overlapping parameters and trying to include specific data.
- Carolyn Shafer: Right now we have two models as it relates to dewatering impacts. It would be interesting to have your perspective; what questions should we be asking?
- Ty Ferre: That is something proposed in the scope of work, I'll contact those 2 groups and ask them for details of the models.

Ty Ferre is teaching a hydrology class with undergraduates; he would like to know if the panel would like to submit simple questions about hydrology which the students answer in video form.

- Panel approves. Ty will move forward with it and coordinate with Angie, looking to create a repository of information as well.

1:55 **Wrap Up and Looking Ahead: October 20 meeting**

- Angie introduces social impact and opportunity assessment scope of work handout. S32 is looking for feedback about what the panel would like to see included or what is missing. Melanie has sent out a Survey Monkey link but will address this in greater depth at the next meeting.
- Ruth Ann LeFebvre: What is the panel's role and how are we involved?
- Angie Donelson: Reviewed the handout for the scope of work. Noted that she has shared studies she is aware of with South 32 to help inform the report. However, as panelists, you may have needs for specific information in your communities that you would like the consultant to compile. Melanie will also share more about this at the following meeting.

Wrap up and Survey: Given the range of issues we talked about at this meeting....how are you feeling?
What do we need to do next?

- Great; Settle discrepancies/differences between existing water models (2)
 - It's providing a platform for advocates as opposed to a forum for advisors. I wish this forum was steered more to an advisory role than one of advocacy. It would help to clearly express what the presentations are geared to do – why this information is relevant, why I should care about it, and how answering the questions will help me. We now need to address what are the benefits to our region and community if the South 32 project proceeds.
 - Time is spent productively; we need to now start making connections in reference to workforce training and what South 32 is looking for specifically in the areas mentioned.
 - Every time I come I learn something new. We need to visit the places where the mine is operating.
 - Great; I'd love to brainstorm how we can do more between meetings. Let's get Ty working!
 - Great; we're developing excellent resources and direction to address the most important issues. We now need to follow the initial program's direction.
 - Today's meeting is the best one to date. What we need to address next is water – it is #1
 - Slowly this is all making sense. It would be helpful to have less side conversations so we are able to hear the speaker. We need to address the workforce issues next.
- How well have you felt heard so far? (0-5, with 0 not at all and 5 very well)
 - o 4 (1)
 - o 4.5 (1)
 - o 5 (6)

Next meeting:

- Deeper dive into workforce development issues for October meeting.
- Scope of work for South 32 upcoming social impact assessment

Meeting adjourned 2:05

ATTACHMENT A

INFORMATION for the Santa Cruz County Advisory Panel on Hermosa Project Presented by Panelist Carolyn Shafer as PARA Board Member: September 15, 2021

These are three sources for information relative to water issues in the Sonoita Creek Watershed that I recommend:

- The [Town of Patagonia “Sonoita Creek Flood & Flow Committee”](#) (“F&F”) which conducts (currently via Zoom) monthly public meetings the second Thursday of each month at 10 a.m.
- [Friends of Sonoita Creek](#) (“FOSC”)
- [Patagonia Area Resource Alliance](#) (“PARA”)

ELEVEN ORGANIZATIONS FILE AN APPEAL of South32’s APP Permit

On September 3, 2021, an Appeal was filed with ADEQ with respect to that agency issuing an Aquifer Protection Permit (APP) to South32’s wholly owned subsidiary, Arizona Minerals, Inc. with respect to its Hermosa Project. The Appellants are: Patagonia Area Resource Alliance, Defenders of Wildlife, AZ Mining Reform Coalition, Borderlands Restoration Network, Center for Biological Diversity, Earthworks, Friends of Santa Cruz River, Friends of Sonoita Creek, Save the Scenic Santa Ritas, Sky Island Alliance, and Tucson Audubon.

The relief requested includes:

- A system of early warning Points of Compliance with minimum monthly monitoring.
- Points of Compliance but be constructed in advance of any mine dewatering activity.
- Baseline data must be collected for a minimum of one full year prior to any large discharge.
- Background data on stream sediments in lower Harshaw Creek must be collected in advance of any major discharge.
- All compliance monitoring and background data collected must be released to the public.
- A full hydrologic study on the effect of the Hermosa Mine related discharge to Harshaw Creek on downstream drinking water aquifers must be conducted.

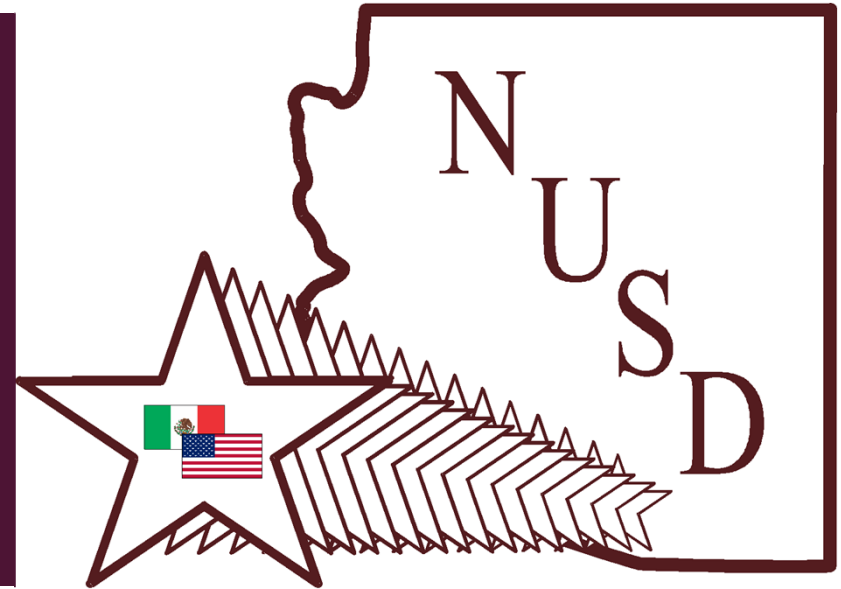
PLEASE learn more by [clicking on this link](#) for additional information on the APP Appeal as well as comments filed by many organizations with the US Forest Service on South32’s request to purchase 13.74 acres of our public lands.

This is about protecting our waters!

ATTACHMENT B

NOGALES UNIFIED SCHOOL DISTRICT #1
PIMA JTED SATELLITE PROGRAMS

WEDNESDAY, AUGUST 25, 2021



NUSD #1 Governing Board Members:

- Mr. Greg Lucero, Governing Board President
- Mr. Robert Rojas, Governing Board Clerk
- Mr. Cesar Lopez, Board Member
- Mr. Manuel Ruiz, Board Member
- Dr. Marcelino Varona Jr., Board Member

NUSD #1 Administration:

- Mr. Fernando Parra, Superintendent
- Ms. Angel Canto, Assistant Superintendent
- Ms. Irma Fontes, CTE/JTED Programs Director
- Ms. Judith Mendoza-Jimenez, Student Services Director
- Mr. Adelmo Sandoval, Finance Director
- Ms. Mayra Zuniga



NUSD#1 PIMA JTED SATELLITE PROGRAMS

NOGALES HIGH SCHOOL (NHS)

- Air Force JROTC
- Automotive Technologies
- Business Management
- Cabinetmaking
- Culinary Arts
- Early Childhood Education
- Fashion Design & Merchandising
- Graphic Design
- Network Security
- Sports Medicine & Rehabilitation*
- Technology Device Maintenance

PIERSON HIGH SCHOOL (PHS)

- Digital Printing*
- Nursing Services
- Digital Photography*

* New programs



PROGRAM CERTIFICATIONS

- Automotive Technologies—Automotive Service Excellence (ASE)
- Business Management—Microsoft Office Specialist
- Cabinetmaking—OSHA 10 Construction Industry
- Culinary Arts—ServSafe Food Protection Manager
- Digital Photography—Visual Design (via Photoshop)
- Digital Printing—Adobe Illustrator
- Early Childhood Education—Praxis Para Pro
- Graphic Design—ADOBE Illustrator
- Network Security—TestOut PC Pro
- Nursing Services—Licensed Nursing Assistant
- Sports Medicine & Rehabilitation—OSHA 10 Healthcare
- Technology Device Maintenance—TestOut PC Pro

NUSD#1 PIMA JTED SATELLITE PROGRAM HIGHLIGHTS

2020-2021 Program Highlights

- JTED satellite enrollment at our two satellite campuses included 1,988 unduplicated count for students taking one or more CTE courses during the 2020-2021 school year. With high student enrollment up significantly at both campuses this year, CTE enrollment is expected to increase as well for the 2021-2022 school year.
- 149 students earned an industry certificates during the 2020-2021 school year, which is also expected to increase this year as we return to in-person instruction.
- Since last school year, we have introduced a few new programs at the NHS and PHS satellite campuses to avoid program duplications between the two schools and increase student offerings. These new programs include Sports Medicine & Rehabilitation, Digital Printing, and Digital Photography programs.
- Last year we began to offer dual enrollment credit for Culinary Arts students through Pima Community College and are completing requirements to offer dual enrollment for the Automotive program as well.

NUSD#1 PIMA JTED SATELLITE PROGRAM HIGHLIGHTS

2020-2021 Program Highlights Continued

- NHS Business Management students, who are part of the school's FBLA program, had another very successful year competing in Leadership, Regional, State and National competitions, garnering dozens of awards as students placed in the top of each competition. This includes being recognized in the Chapter Sweepstakes and 1st place this past January in competition, edging out University High (Tucson) and Metro Tech of Phoenix.
- PHS Nursing students did exceptionally well on the CTE state assessment this year, earning some of the top scores in the state. Additionally, 95% of the students earned their LNA certification this past spring and we assisted Spring 2020 graduates to obtain certification as well.
- As you are aware, we completed a remodel and upgrade of our Culinary Arts classroom and are now proceeding with remodeling plans for the district's Automotive program. We are beginning the process to contract an architect and plan for an automotive upgrade to meet industry standards.
- This past year we entered into a partnership between the NHS Automotive Technologies program and Royal Automotive in Tucson that resulted in three NHS graduates being offered paid summer internships which resulted in all three graduates being hired as full-time mechanics at Royal. This year Royal has asked to expand the industry partnership to include more Automotive students as well as Business Management students for paid internship and hiring opportunities.
- With changes in the economic landscape and local industry needs, we are not only upgrading current programs to meet industry standards, but new programs are continuously being explored for implementation in the future to meet student and industry needs.

NUSD#1 PIMA JTED SATELLITE PROGRAMS

Air Force JROTC

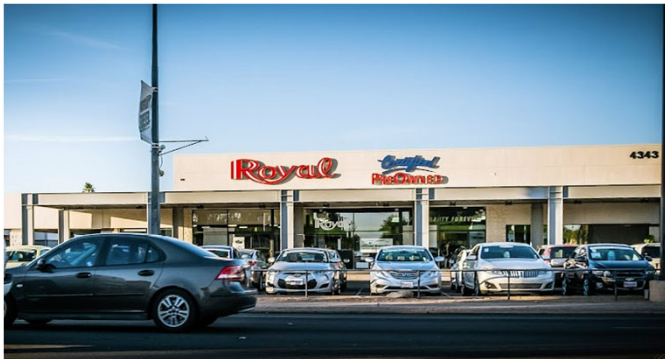
- Under the command of newly hired Lt. Colonel Roxburgh, the cadets are focused on leadership activities and special team activities, including Color Guard, Drill Team, Rocketry, Kitty Hawk Air Society among others. In fact, students have already completed two Color Guard activities in this new school year.
- Additionally, the JROTC has almost three dozen cadets working with the Civil Air Patrol in Tucson for a flight around Southern Arizona in which students will be able to pilot the aircraft.



NUSD#1 PIMA JTED SATELLITE PROGRAMS

Automotive Technologies

- We are currently completing requirements for dual certification with Pima Community College for this program and, as mentioned, have begun plans for a remodel and expansion of the auto classroom/bay to meet industry standards. Students are also earning ASE certification and continuing participating in CTSO activities.
- This past year, NUSD entered into a partnership with the Royal Automotive Group in which 3 NHS graduates were accepted into a paid internship program in June and were hired to work full-time at Royal beginning in July. Their Operations Director (Gordon Young) was very impressed and has asked to now expand to include more Nogales graduates in internships.



NUSD#1 PIMA JTED SATELLITE PROGRAMS

Business Management

- This program also boasts the largest CTSO membership of our satellite programs, with a very successful competition history as already mentioned. Advanced students are also able to enroll in Business Management coursework as part of the district's International Baccalaureate program.
- FBLA members have excelled, with dozens placing highly in Arizona leadership, regional, and state competitions.
- Students manage a school store during lunch time and also engage in community service projects outside of school such as a canned food drive benefitting a local shelter, community cleanup, Christmas toy drive for district children, and raising funds for a local non-profit agency that provides medical assistance for needy children.



NUSD#1 PIMA JTED SATELLITE PROGRAMS

Cabinetmaking

- This program, which has a relatively new instructor, teaches students OSHA compliant practices for the construction industry and provides opportunities for hands-on lab activities. Students are engaged in numerous projects throughout the year to develop carpentry skills and techniques.
- Remodeling on a finishing room is being finalized to provide a space for students to varnish and apply spray finishes to completed pieces.
- The program has also increased CTSO membership over the last few years, building leadership skills of members and has begun to become involved in state competitions.



NUSD#1 PIMA JTED SATELLITE PROGRAMS

Culinary Arts

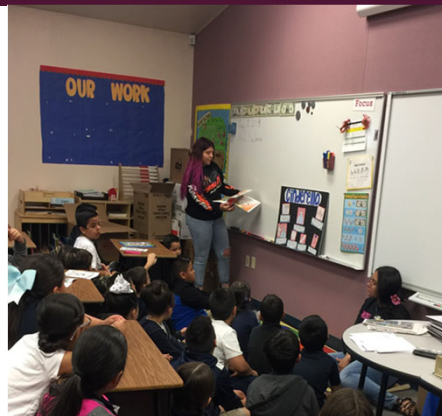
- Students enjoy exploring the world of culinary arts in the remodeled classroom that now boasts industrial appliances identical to those found in restaurants and hotels.
- The program has also developed a strong industry partnership with a local hotel owner who has additional properties in California and provides program support.
- The advanced class is involved in catering events such as the NHS Hall of Fame Dinner and various school activities. They have also highlighted their skills while collaborating with Sodexo, the district's food service, through participation in county culinary events hosted by the Santa Cruz County Fresh Produce Association.



NUSD#1 PIMA JTED SATELLITE PROGRAMS

Early Childhood Education

- This program offers Para Pro certification and hands-on lab experience at all six of our district elementary schools.
- After studying early childhood curriculum material and theories, students are transported weekly to our schools to work directly with certified elementary school teachers, providing classroom instruction and assessments to students enrolled in our primary grade levels.
- Program completers leave with the ability and certification to become employed as an instructional aide in local schools or go on to pursue a career in education.



NUSD#1 PIMA JTED SATELLITE PROGRAMS

Fashion Design and Merchandising

- Students learn presentation, design, and sewing experience in this program. Prior to the pandemic, advanced students also participated in a Tucson fashion show with Pima College students and local designers and entrepreneurs to showcase their clothing designs.
- Fashion design students also collaborate with the school's theater program, designing the wardrobe for theatrical productions.
- Partnering with the Culinary Arts students, these students also have engaged in fundraising activities for various holidays, such as Valentines Day, as part of their CTSO campus fundraising.



NUSD#1 PIMA JTED SATELLITE PROGRAMS

Graphic Design

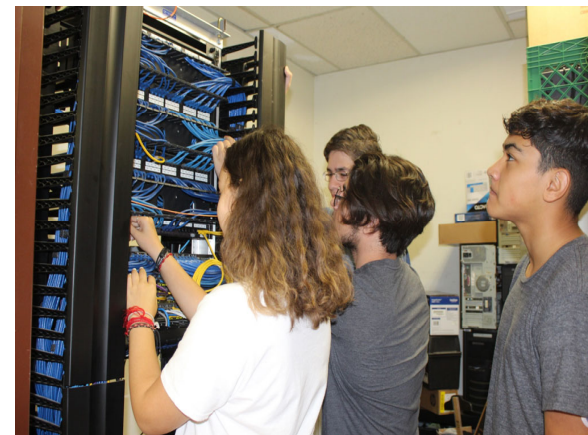
- This popular program offers ADOBE certification and multimedia lab experiences for students.
- After the retirement of the program's teacher this past spring, a new instructor with a wealth of international and university level experience was hired. He brings commercial filmmaking and multimedia industry experience to the table for first year and advanced students. Students also create and sell NHS school gear to support athletics and other special events.



NUSD#1 PIMA JTED SATELLITE PROGRAMS

Network Technologies and Technology Device Maintenance

- Students enrolled in both of these programs and earn the TestOut PC Pro certification.
- In addition to strong CTSO participation, the students in these programs comprise the school's Geek Squad, a skilled team that works with site IT staff to provide computer repair, network security assistance, and technology support for staff. Additionally, these students provide staff development for district teachers and staff regarding technology programs and applications.



NUSD#1 PIMA JTED SATELLITE PROGRAMS

Sports Medicine

- This is a relatively new program that is in its second of implementation and is currently enrolling year 2 students on the road to becoming our first completers.
- Students earn OSHA 10 Healthcare certification and have opportunities for hands-on application during lab activities.
- We are in the planning stage to provide a base health occupations course after which students interested in health careers could transition to the Sports Medicine program at the NHS campus or enroll in the Nursing Services program at the PHS satellite campus.



NUSD#1 PIMA JTED SATELLITE PROGRAMS

Digital Photography

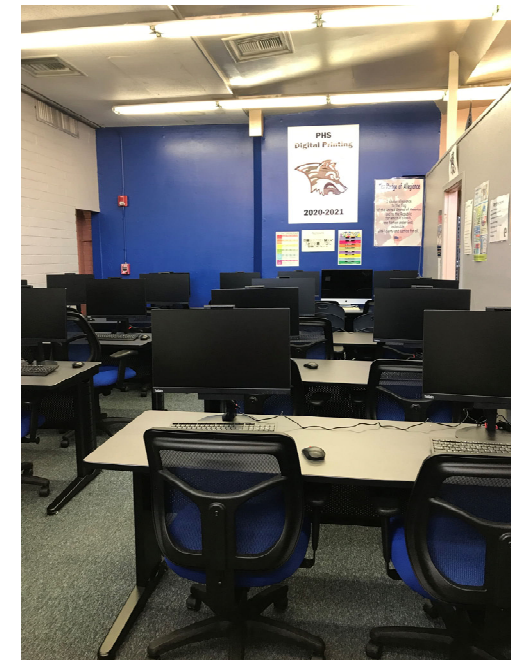
- In an effort to refresh district offerings, avoid program duplication in our district's satellite programs, and provide a program of high interest to our alternative school students, Digital Photography was added for this school year, increasing JTED satellite enrollment at this site.
- Students will learn virtual design using Photoshop, refine their photography and editing skills, and will be provided opportunities for application in the production of the school's yearbook and social media updates.



NUSD#1 PIMA JTED SATELLITE PROGRAMS

Digital Printing

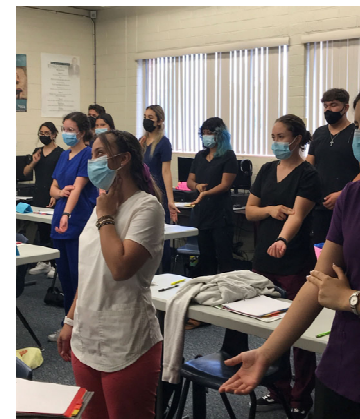
- This is another new program provided at Pierson High School satellite campus to expand district JTED offerings.
- The site's Technology Device Maintenance program was sunset and, based upon student survey results and industry outlook, Digital Printing was selected as a new program offering.
- The program features ADOBE certification and includes a remodeled classroom space as well as new lab space that includes industry standard printing equipment, including a vinyl banner maker.



NUSD#1 PIMA JTED SATELLITE PROGRAMS

Nursing Services

- We no longer contract out for our nursing program instruction. Rather, we have been approved as our own Certified Nursing Assistant program by the Arizona State Board of Nursing. The PHS Nursing program has also become certified as a testing site so that our LNA students no longer travel to Tucson, but are assessed in their own classroom at the end of the year.
- This past year 95% of the students earned their LNA certification and a number of nursing graduates returned for assistance in preparing for and successfully completing their LNA assessment after school closed in the Spring of 2020 and there were unable to be assessed.



COLLABORATIVE ACTIVITIES WITH PIMA JTED

- Our CTE team has enjoyed opportunities for training through Pima JTED, including planned training for student officers which they will participate in this year.
- We have also appreciated access to lesson plans and activities for our various programs through the JTED Curriculum Consortium where our teachers can share model lessons with other JTED teachers.
- NUSD CTE teachers also have benefitted from participation in Pima JTED industry partner and advisory meetings.
- JTED staff will be assisting the district in producing a film to highlight and promote our satellite programs offerings.
- We look forward to support Pima JTED in areas such as their fundraising efforts at annual events like the Gala, which benefits our students by providing funds for travel and participation in CTSO state and regional competitions as well as teacher scholarship funds to enroll in higher education coursework.





THANK YOU

